

How to Install Espressive Barista for Microsoft Teams

Table of Contents

1. Overview	2
2. Feature Requirements	3
3. How to Set Up the Teams Integration	3

1. Overview

The release of Espressive Barista for Microsoft Teams is a significant step forward. The app features a native chat experience, a homepage for managing pending requests, and support for approval workflows.

2. Feature Requirements

- You will need a user with a Global Admin role for Microsoft Azure.
- Create an app registration and set up the Azure integrations in Barista by following the steps on this document: [App Registration and Integration Setup for Microsoft Azure](#).

Note: If the Teams integration is already in place, you must uninstall it first. Please ask your Customer Success representative to assist you.

3. How to Set Up the Teams Integration

1. Go to the Barista app.
2. Click on **More** and then on **Admin**.
3. Click on **Integrations** from the menu and then click on the **Microsoft Teams** icon.
4. Click on the **INTEGRATE MICROSOFT TEAMS** button.

The screenshot shows the 'Integrations > Microsoft Teams' page. It features a 'Microsoft Teams' section with an 'INTEGRATE MICROSOFT TEAMS' button. To the right is a 'Connection Test' section with a 'TEST' button and the status 'Integration status: Registering'. Below this is a section titled 'Download Barista bot package and follow the steps' with a 'DOWNLOAD PACKAGE' button. A 'Steps' box contains three instructions: 1. Install the package which you have just downloaded. 2. The token (key) is auto-generated for you. You can regenerate the Token if you like. Click COPY TO CLIPBOARD button to copy the token. 3. Go to Microsoft Teams. In the left "More" menu, which looks like `...` find Barista Bot app. Click on More menu and paste the token. This will authenticate your tenant. At the bottom, there is a 'REGENERATE TOKEN' button, a token '6cpfFtSo6qwpNBLZDBol', and a 'COPY TO CLIPBOARD' button.

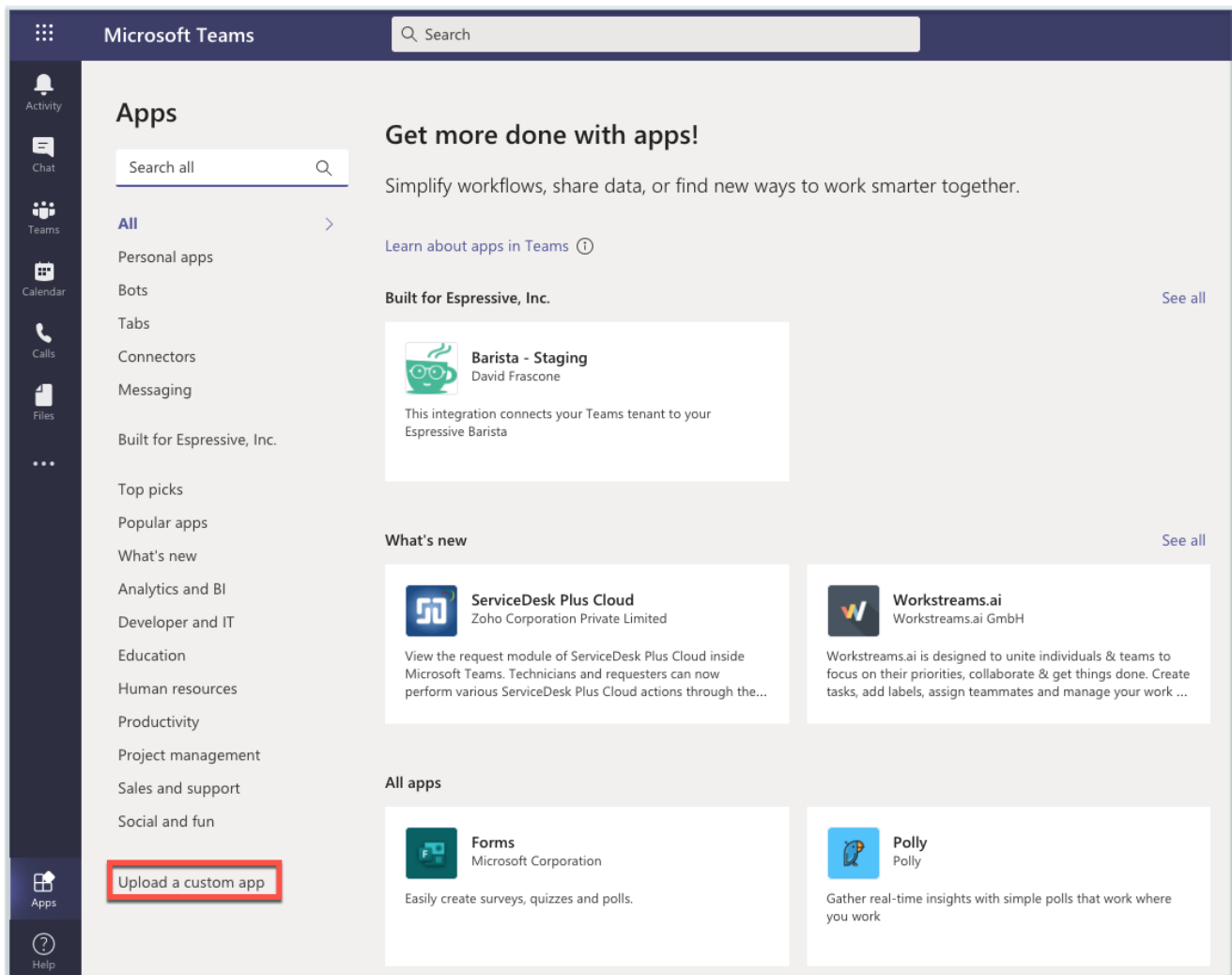
5. Click on the **DOWNLOAD PACKAGE** button.

You will receive a download of the Barista app as a compressed file. Save this for later.

6. Click on the **REGENERATE TOKEN** button to generate an authorization token for the application.
7. Copy the value to provide it later in the Teams app.
8. On a different page, log into <https://teams.microsoft.com>
9. Go to **Apps**.

Find the shortcut on the bottom left corner of the page, above Help.

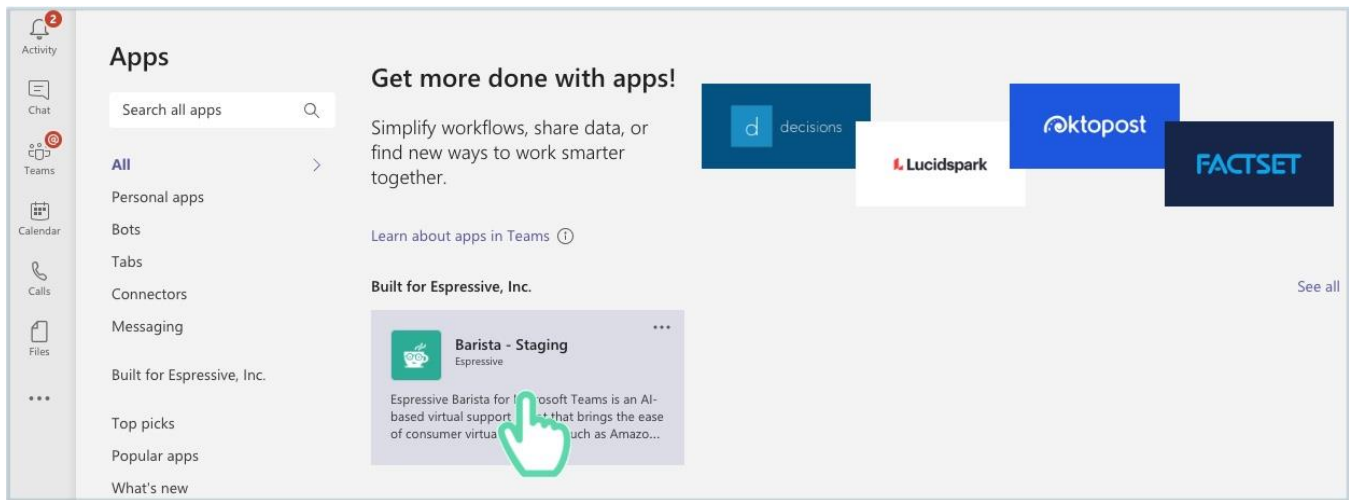
10. Click on **Upload a custom app**.



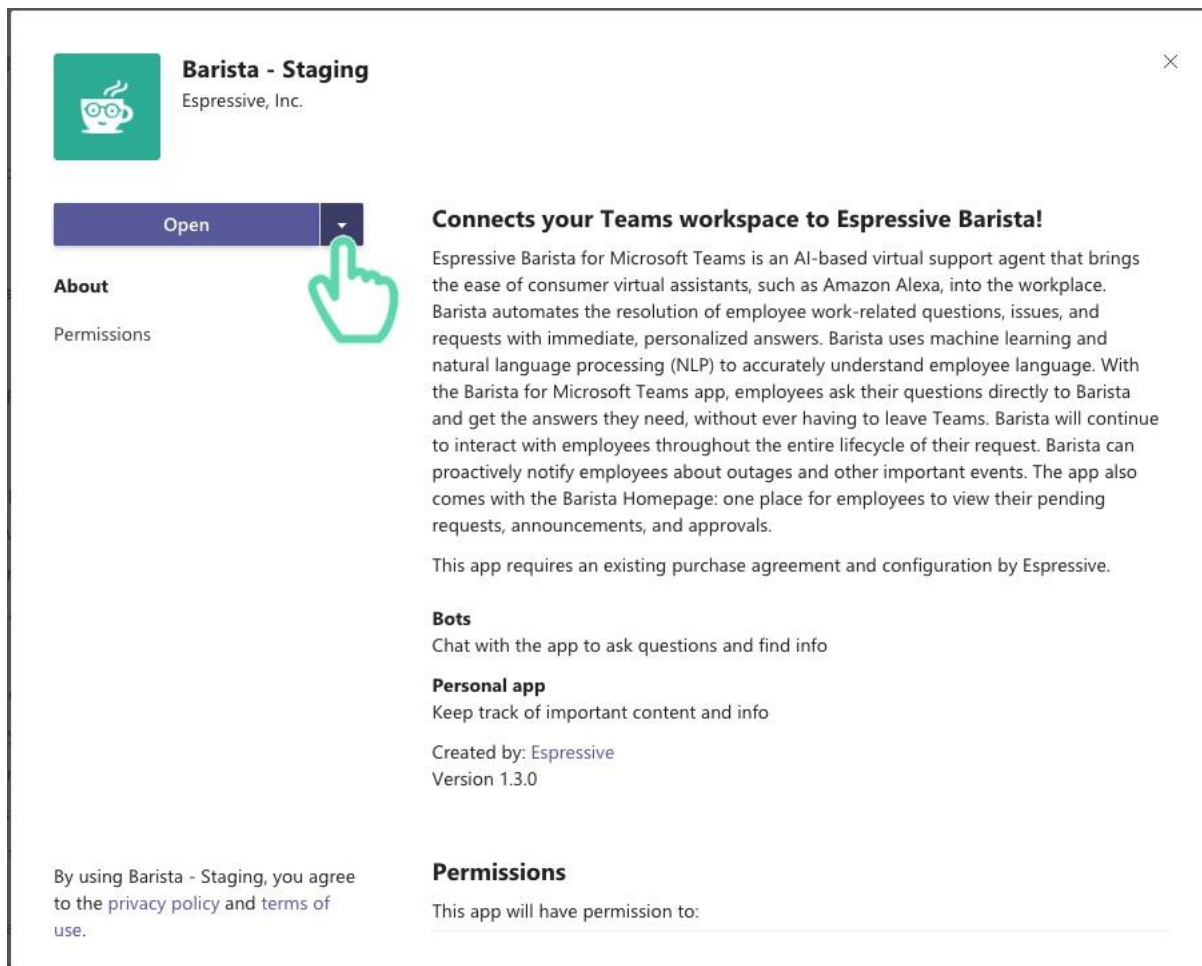
11. Select the recently downloaded file from Barista.

You should be redirected to the Apps page.

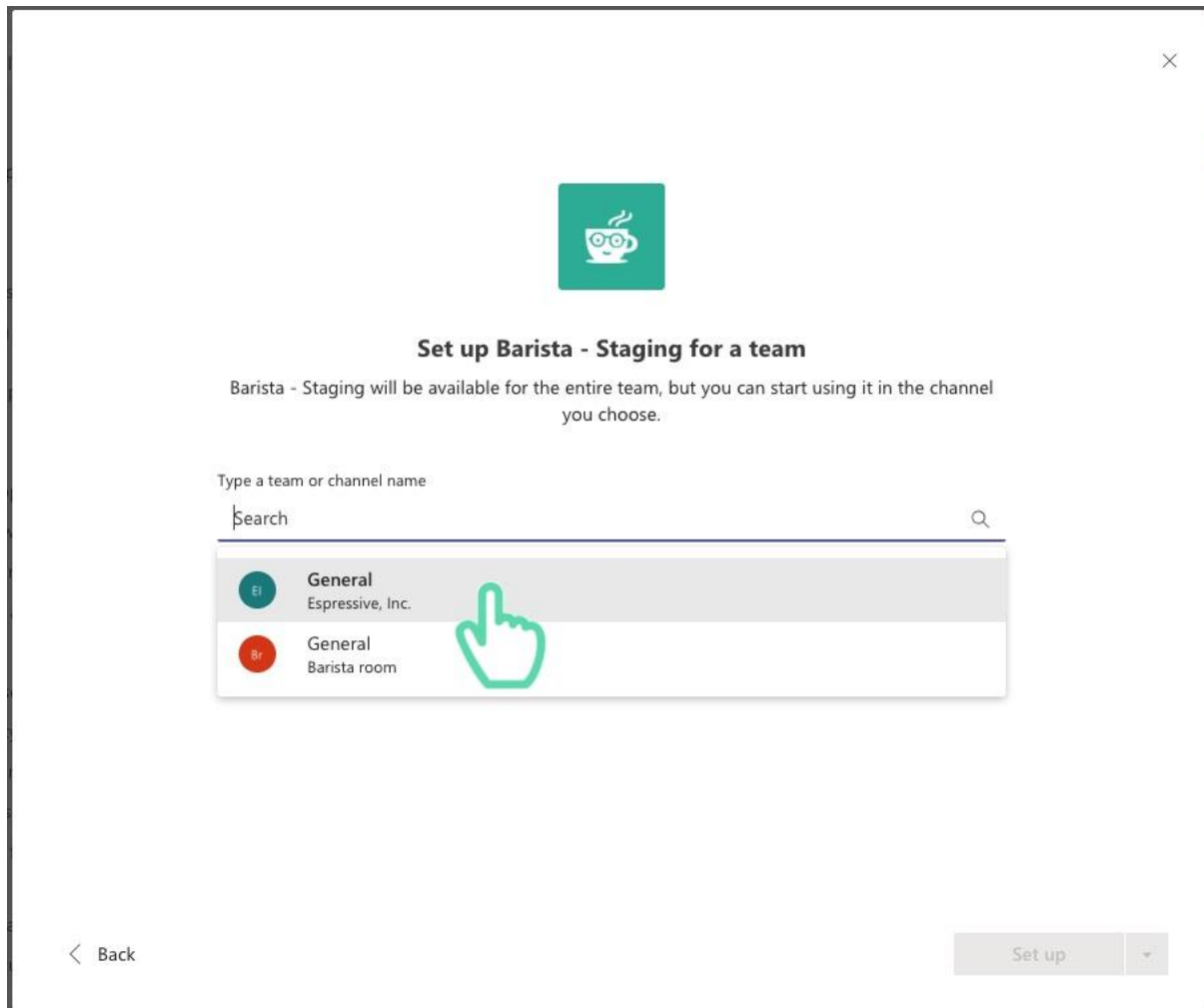
12. Click on the card that says Barista (NOT on the ellipsis, on the card itself).



13. Click on the triangle icon to display the drop-down menu.



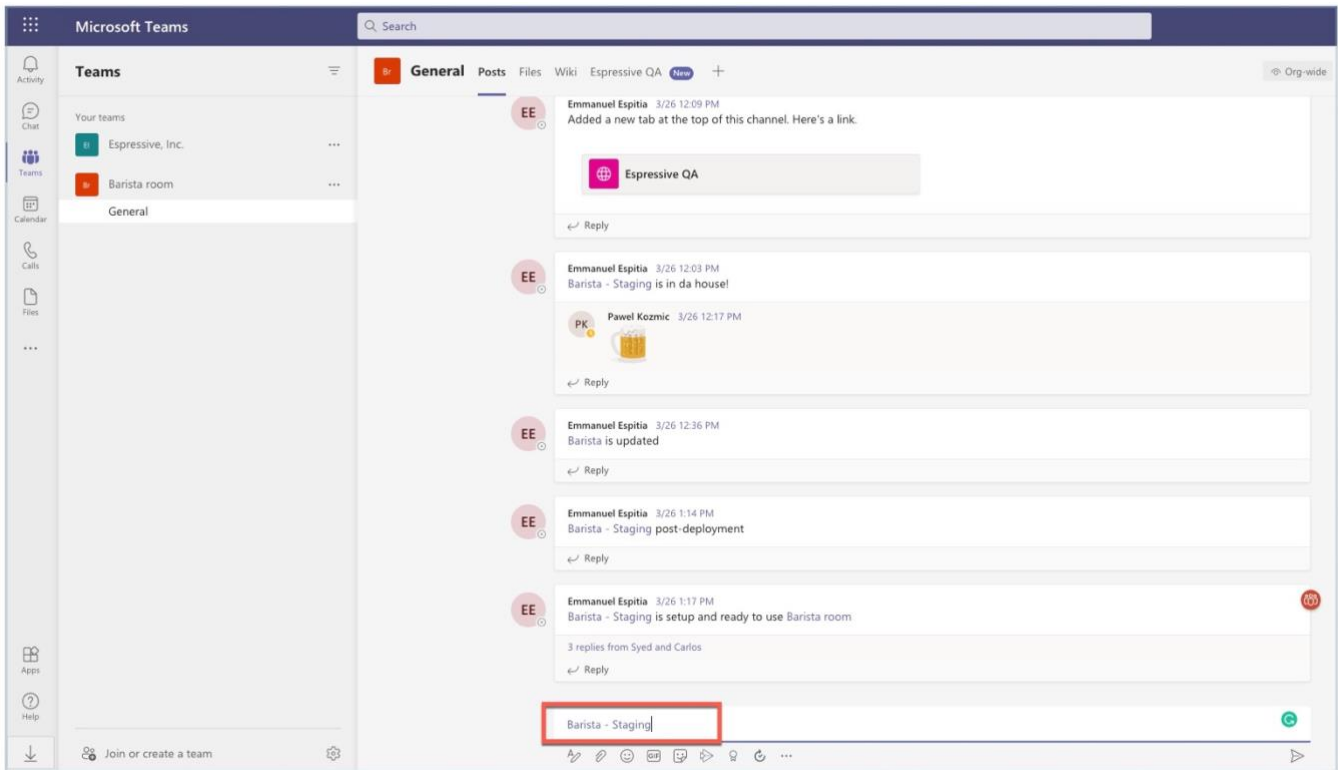
14. Click on **Add to a team** and select the team that you want.



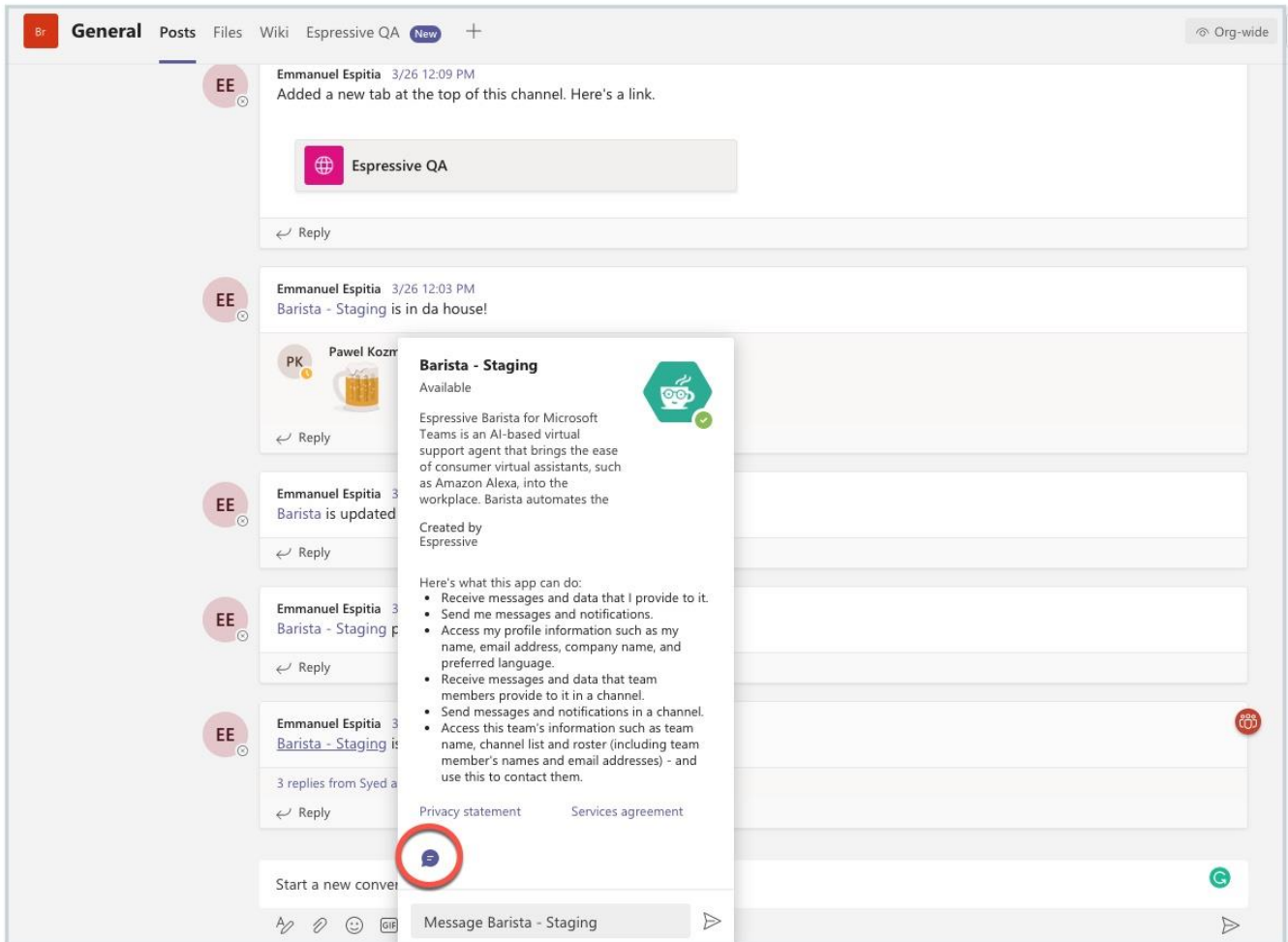
15. Click on the **Set up a bot** button.

You'll be redirected to the team you chose. Now you need to mention Barista inside the channel.

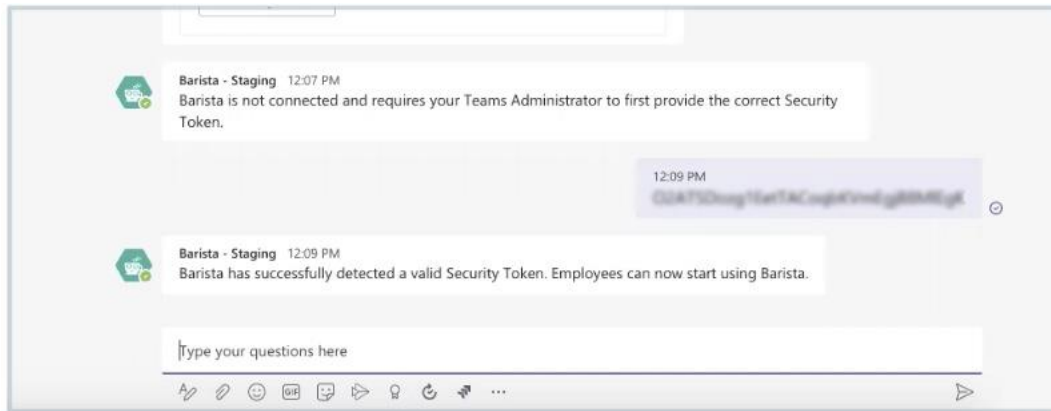
16. Click enter to send the mention automatically filled by the system “@barista”



17. Hover over the Barista mention and click on the small message icon to open a private chat with Barista.

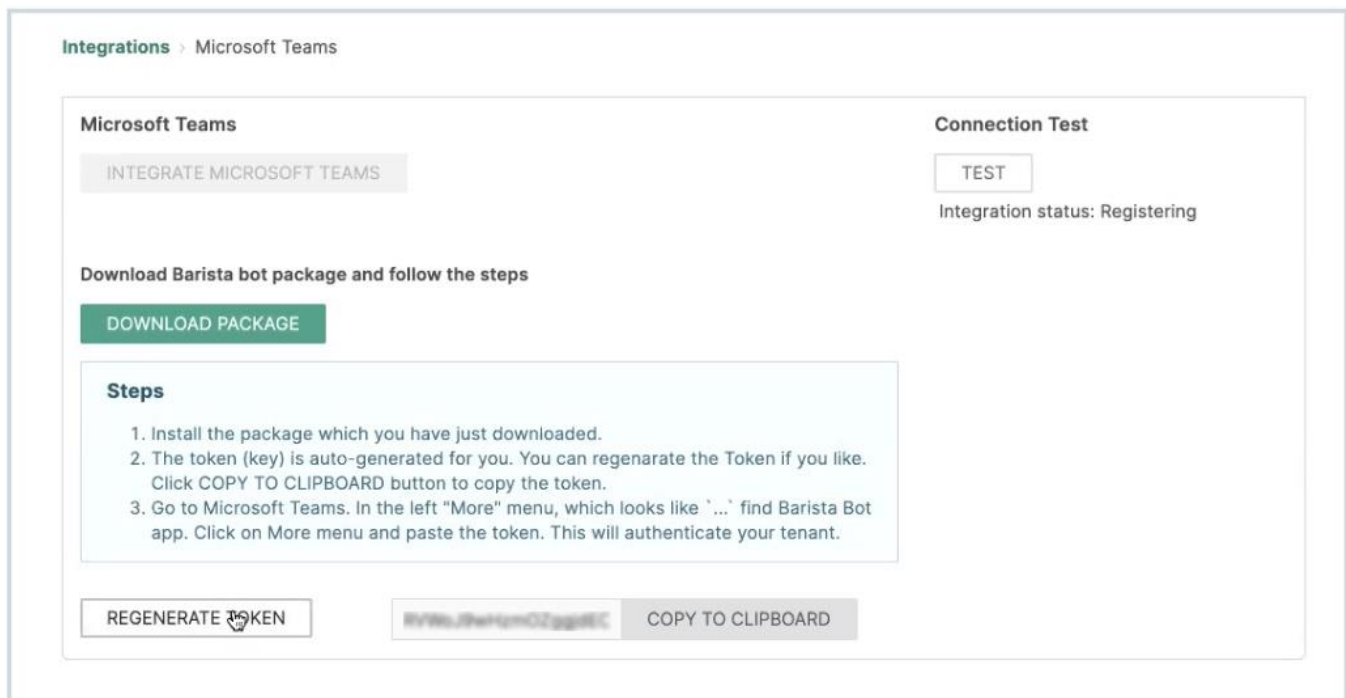


18. In the private conversation, paste the authorization token you obtained from the Barista app.



You should receive a confirmation from the bot that the token is valid and ready to be used. If this is not the case, please generate a new token and retry. You can regenerate the token in Barista as many times as you need.

Note: The Connection Test indicates your integration status, which at this point should say, "Registering."



19. After getting the confirmation in Teams, click on the **TEST** button, and the integration status should say, "Connected."

Once you refresh the page, the token will be hidden, and the option to remove the integration will be the only thing displayed in Barista.

